





R SYSTEM

Reef-ready setup

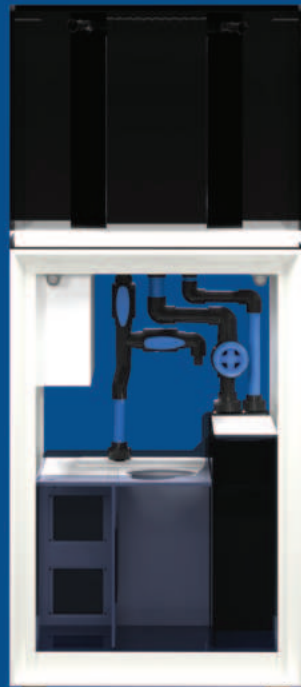
The UNS Reef System offers a reef-ready setup in four different sizes. The R line of rimless aquariums features signature UNS 45° mitered edges, black silicone and thicker, ultra-clear glass ensuring long term performance. The system includes a matching aluminum-framed stand with a built-in sump filtration system. The stand's doors are magnetic and fully removable for easy device control and personalized customization. Larger models include storage drawers for organization of aquarium essentials and more. Each detail of this system was carefully considered and designed to provide the right balance of functionality and aesthetic.



R SYSTEM AQUARIUM STAND IS PATENT PENDING



R600



TANK SPECIFICATIONS

DIMENSIONS	L23.62 X D19.69 X H19.69IN L60 X D50 X H50CM
GLASS THICKNESS	10MM
VOLUME	32.5GAL 123L
TOTAL VOLUME [INCLUDING SUMP]	45.5GAL 174L

SUMP SPECIFICATIONS

DIMENSIONS	L19.69 X D16.85 X H17.72IN L50 X D42.8 X H45CM
VOLUME	13GAL 51L
FILTER BAGS	2
TOTAL CHAMBERS	4
CHAMBER 1 ACCESSORY CLEARANCE	L4.09 X D11.38IN L10.4 X D28.9CM
CHAMBER 2 ACCESSORY CLEARANCE	L6.85 X D8.82IN L17.4 X D22.4CM
CHAMBER 3 ACCESSORY CLEARANCE	L4.88 X D8.82IN L12.4 X D22.4CM
CHAMBER 4 ACCESSORY CLEARANCE	L10.83 X D5.12IN L27.5 X D13CM

STAND SPECIFICATIONS

DIMENSIONS	L23.62 X D19.69 X H36.3IN L60 X D50 X H92.1CM
DOOR COUNT	3
STORAGE DRAWERS	0



Pr90



TANK SPECIFICATIONS

DIMENSIONS	L35.43 X D22.05 X H22.05IN L90 X D56 X H56CM
GLASS THICKNESS	12MM
VOLUME	61.83GAL 234L
TOTAL VOLUME [INCLUDING SUMP]	82.83GAL 312L

SUMP SPECIFICATIONS

DIMENSIONS	L25.59 X D19.21 X H17.72IN L65 X D48.8 X H45CM
VOLUME	21GAL 78L
FILTER BAGS	3
TOTAL CHAMBERS	4
CHAMBER 1 ACCESSORY CLEARANCE	L4.09 X D13.86IN L10.4 X D34.7CM
CHAMBER 2 ACCESSORY CLEARANCE	L9.21 X D18.35IN L23.4 X D46.6CM
CHAMBER 3 ACCESSORY CLEARANCE	L8.43 X D8.82IN L21.4 X D22.4CM
CHAMBER 4 ACCESSORY CLEARANCE	L6.81 X D7.44IN L17.3 X D18.9CM

STAND SPECIFICATIONS

DIMENSIONS	L35.43 X D22.05 X H38.3IN L90 X D56 X H92.1CM
DOOR COUNT	4
STORAGE DRAWERS	1



P120



TANK SPECIFICATIONS

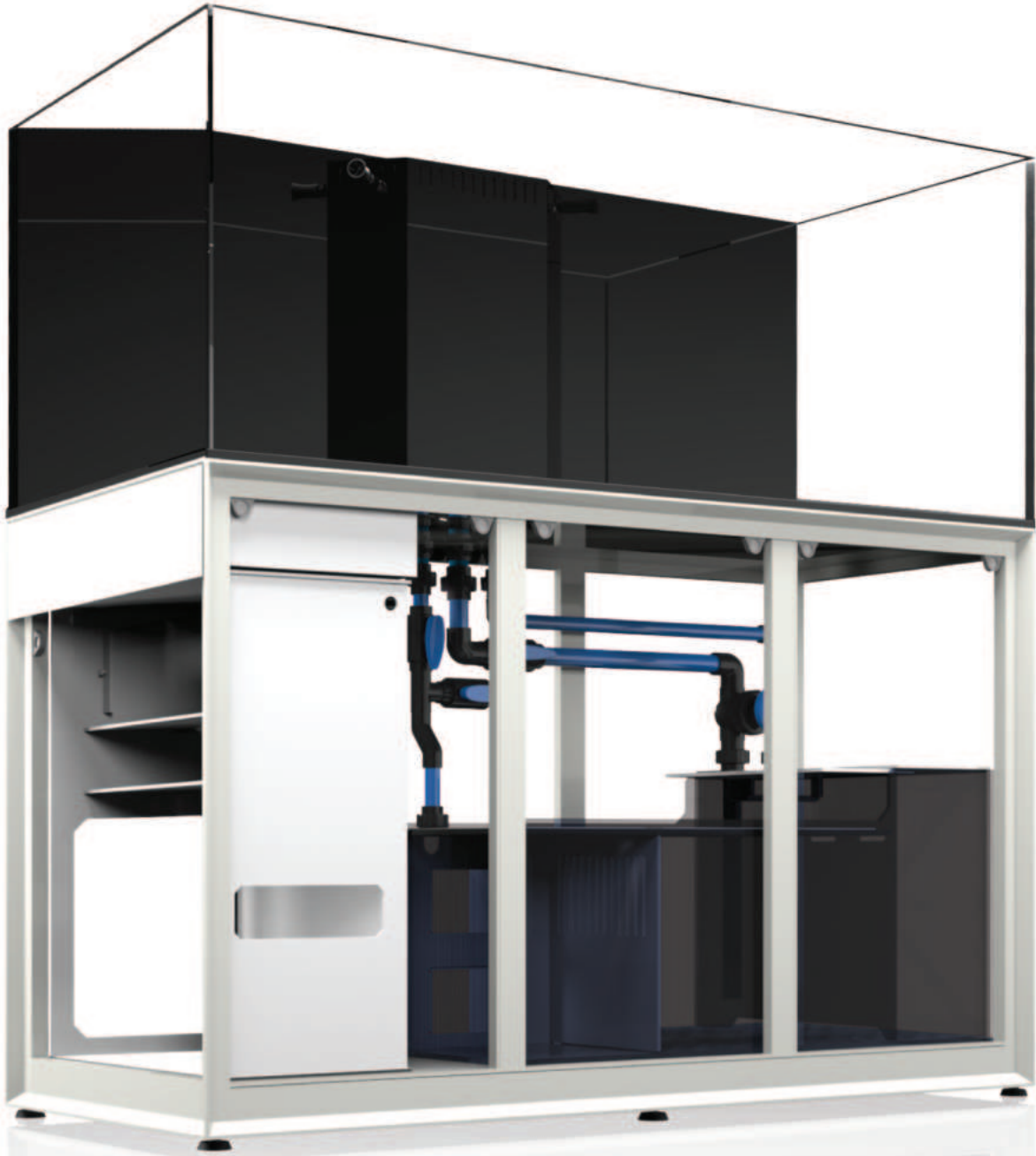
DIMENSIONS	L47.24 X D23.82 X H23.62IN L120 X D60 X H60CM
GLASS THICKNESS	15MM
VOLUME	94.32GAL 357L
TOTAL VOLUME [INCLUDING SUMP]	122.32GAL 463L

SUMP SPECIFICATIONS

DIMENSIONS	L31.69 X D20.79 X H17.72IN L80.5 X D52.8 X H45CM
VOLUME	28GAL 106L
FILTER BAGS	3
TOTAL CHAMBERS	4
CHAMBER 1 ACCESSORY CLEARANCE	18.85 X D15.31IN L17.4 X D38.9CM
CHAMBER 2 ACCESSORY CLEARANCE	110.83 X D18.78IN L27.5 X D47.7CM
CHAMBER 3 ACCESSORY CLEARANCE	19.84 X D10.24IN L25 X D26CM
CHAMBER 4 ACCESSORY CLEARANCE	18.31 X D7.24IN L21 X D18.4CM

STAND SPECIFICATIONS

DIMENSIONS	L47.24 X D23.82 X H36.3IN L120 X D60 X H92.1CM
DOOR COUNT	4
STORAGE DRAWERS	1



R150



TANK SPECIFICATIONS

DIMENSIONS	159.06 X D23.82 X H23.62IN 1150 X D80 X H80CM
GLASS THICKNESS	15MM
VOLUME	118.63GAL 449L
TOTAL VOLUME [INCLUDING SUMP]	152.63GAL 576L

SUMP SPECIFICATIONS

DIMENSIONS	137.4 X D20.79 X H17.72IN 105 X D52.8 X H45CM
VOLUME	34GAL 127L
FILTER BAGS	3
TOTAL CHAMBERS	4
CHAMBER 1 ACCESSORY CLEARANCE	18.85 X D15.31IN 117.4 X D38.9CM
CHAMBER 2 ACCESSORY CLEARANCE	18.54 X D18.78IN 142 X D47.7CM
CHAMBER 3 ACCESSORY CLEARANCE	19.64 X D10.24IN 125 X D26CM
CHAMBER 4 ACCESSORY CLEARANCE	18.31 X D7.24IN 121.1 X D18.4CM

STAND SPECIFICATIONS

DIMENSIONS	159.06 X D23.62 X H38.3IN 1150 X D80 X H92.1CM
DOOR COUNT	5
STORAGE DRAWERS	1



R180



TANK SPECIFICATIONS

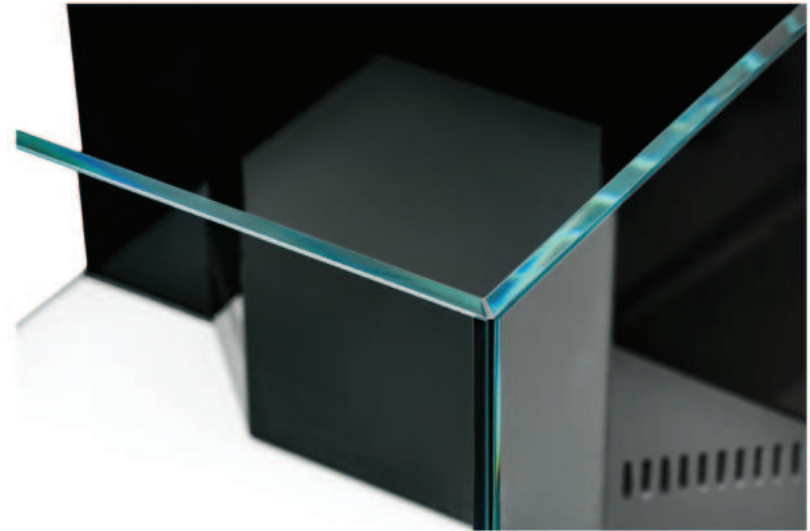
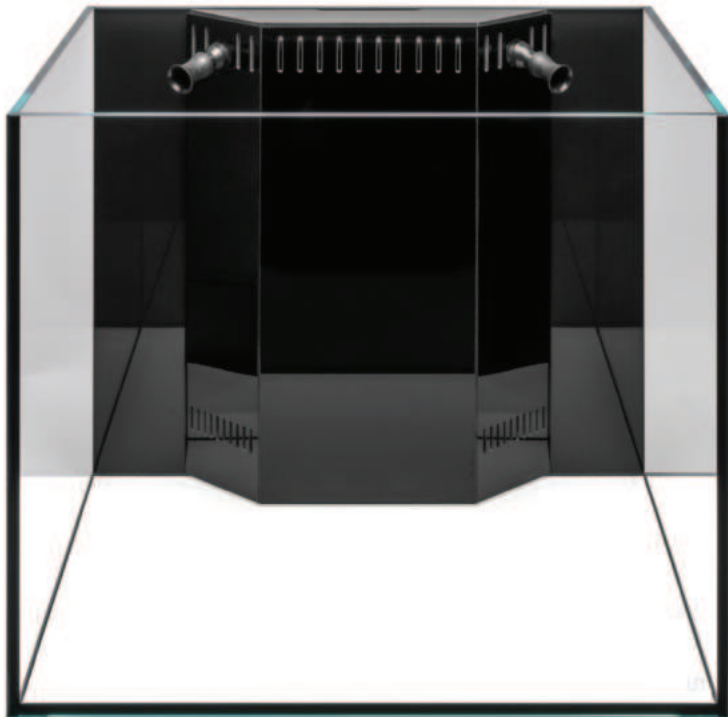
DIMENSIONS	L70.87 X D23.82 X H23.62IN L180 X D80 X H80CM
GLASS THICKNESS	19MM
VOLUME	147.18GAL 557L
TOTAL VOLUME [INCLUDING SUMP]	185.18GAL 702L

SUMP SPECIFICATIONS

DIMENSIONS	L43.31 X D20.79 X H17.72IN L110 X D52.8 X H45CM
VOLUME	38GAL 145L
FILTER BAGS	3
TOTAL CHAMBERS	4
CHAMBER 1 ACCESSORY CLEARANCE	L8.85 X D15.31IN L17.4 X D38.9CM
CHAMBER 2 ACCESSORY CLEARANCE	L19.69 X D18.78IN L50 X D47.7CM
CHAMBER 3 ACCESSORY CLEARANCE	L12.56 X D8.27IN L31.9 X D21CM
CHAMBER 4 ACCESSORY CLEARANCE	L11.02 X D9.21IN L28 X D23.4CM

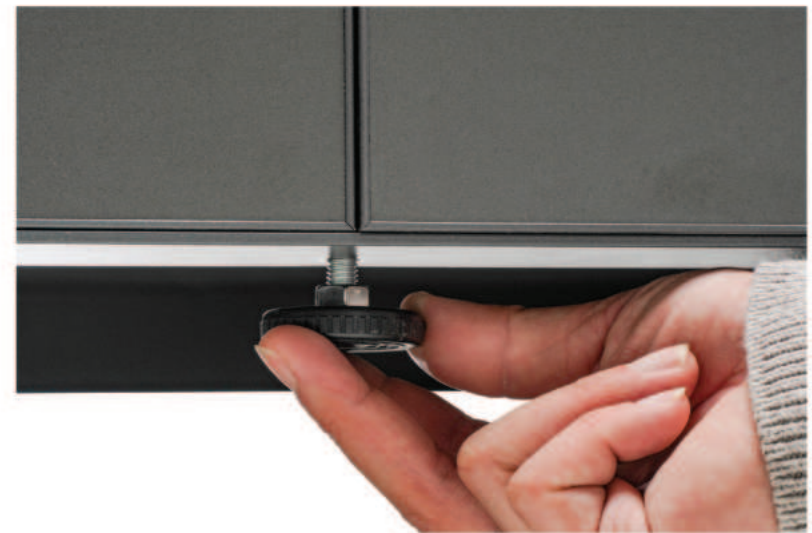
STAND SPECIFICATIONS

DIMENSIONS	L70.87 X D23.82 X H36.3IN L180 X D80 X H92.1CM
DOOR COUNT	6
STORAGE DRAWERS	1



RIMLESS AQUARIUM

Enjoy signature 45° mitered edges, high-clarity glass and more. Crafted with thicker glass and utilizing black silicone, our R line of rimless aquariums intend to highlight the colors of corals and livestock while minimizing the visibility of coralline. Each tank features a sleek white bottom, allowing for bare-bottom setups that disguise equipment within the integrated sump below.



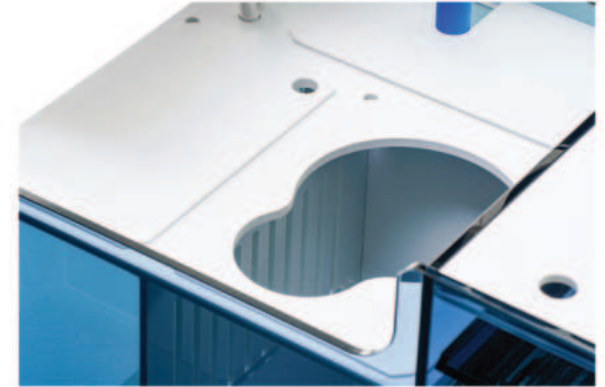
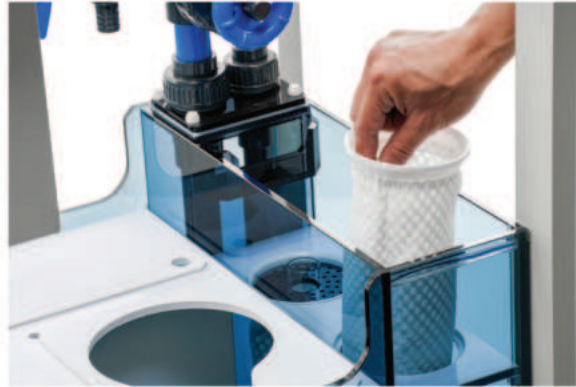
ALUMINUM STAND

Aluminum-framed, fully removable, magnetic doors for easy access during maintenance or equipment installation. The R90 and larger models include convenient pull-out drawers, controller boxes and space for personalized setup, optimal wire management and storage. Made to be modular and customizable according to needs, each stand comes fully assembled with the sump pre-installed.



PLUMBING

All necessary plumbing is included with each system to provide in and out flow as well as a quick water change option. Simply place the tank on top of the stand, connect a few parts and go.



INTEGRATED SUMP

The integrated sump system provides comprehensive features. Gate valves ensure smooth water flow while minimizing noise, while additional ball valves and barbed fittings cater to external equipment needs such as reactors or chillers. To reduce salt creep, a gasket is placed below the drain pipe and sump. The multi-chamber design includes a prefilter baffle to capture larger solids, reducing sock replacement frequency. Diffuser plates are incorporated to minimize noise and floating. The second chamber is specially designed to accommodate a variety of popular protein skimmers and respective water level requirements. The third chamber can be customized with desired media or used as a refugium.



ELECTRICAL TOWER

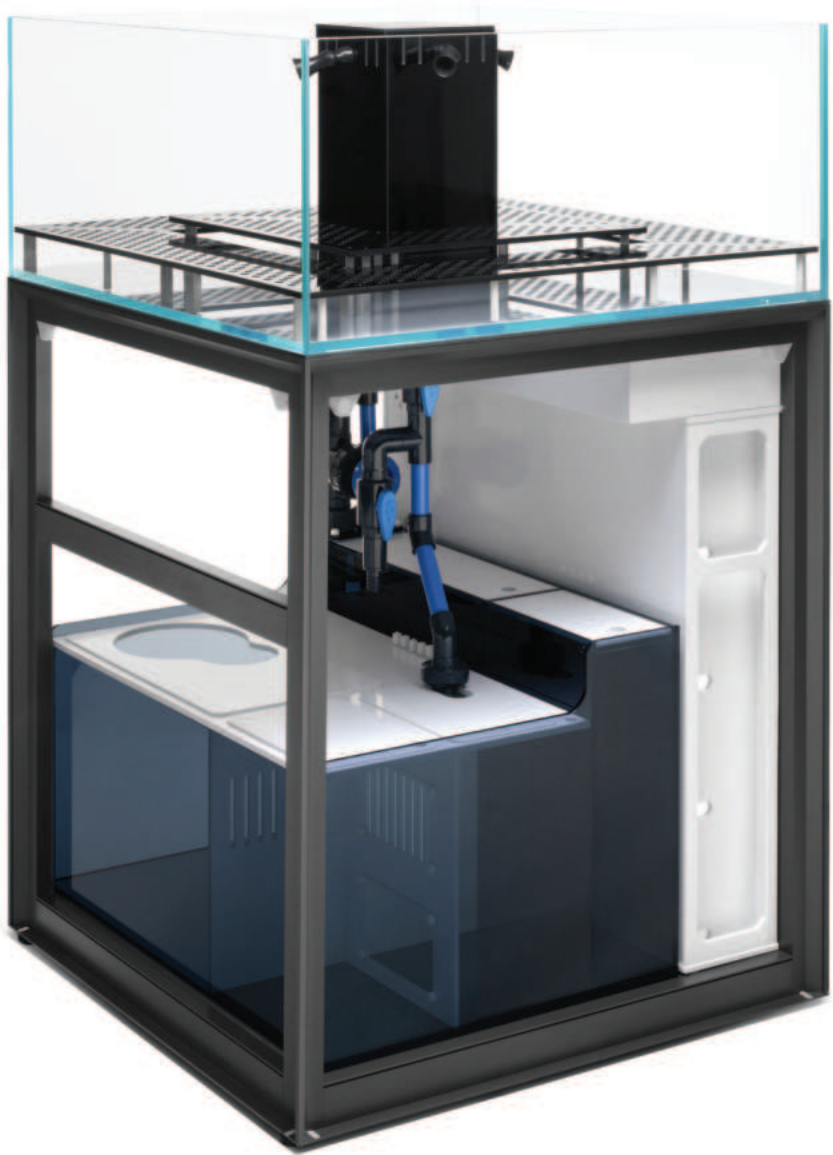
The built-in controller box provides a dedicated space for surge protectors and optimal cable management. On the R90 and larger models, the bottom section may be used for a chiller and includes a viewing window for easy monitoring. Each controller board is removable and can be easily accessed by removing the left stand door while ensuring wires remain tucked away.



ATO

Increases water capacity for added convenience. ATO pairs perfectly with all Ultum Nature Systems R Aquarium sump units reducing the need to frequently monitor water levels in the aquarium. Additionally, a preinstalled float valve ensures automatic top-offs, providing convenience and peace of mind.

① Version 1 of the ATO is shown.



Proo

FRAG HOLDING SYSTEM

The R80 is a standout model in the R Systems lineup, providing a comprehensive and organized method for storing and highlighting coral. Its central overflow allows for 360-degree water circulation, and the included Frag Trays support a variety of corals for quick and easy viewing. The patent-pending aluminum stand shares the same build as other R System models and includes a built-in sump, electrical tower, and storage drawer. Unique to the R80, the system also features a glass sump with an integrated ATO reservoir and dedicated shelves for dosing containers within the electrical tower.



FRONT



BACK



LEFT



RIGHT



ALSO AVAILABLE IN:



TANK SPECIFICATIONS

DIMENSIONS	L31.5 X D31.5 X H14.17IN L80 X D80 X H38CM
GLASS THICKNESS	12MM
VOLUME	52GAL 192L
TOTAL VOLUME [INCLUDING SUMP]	76 GAL 277L

SUMP SPECIFICATIONS

DIMENSIONS	L21.3 x D28.74 x H17.72IN L54.1 x D73 x H45CM
VOLUME	24GAL 89L
FILTER BAGS	3
TOTAL CHAMBERS	4
CHAMBER 1 ACCESSORY CLEARANCE	L3.84 X D13.58IN L10 X D34.5CM
CHAMBER 2 ACCESSORY CLEARANCE	L9.45 X D16.73IN L24 X D42.5CM
CHAMBER 3 ACCESSORY CLEARANCE	L6.3 X D8.66IN L16 X D22CM
CHAMBER 4 ACCESSORY CLEARANCE	L6.89 X D7.48IN L17 X D19CM

STAND SPECIFICATIONS

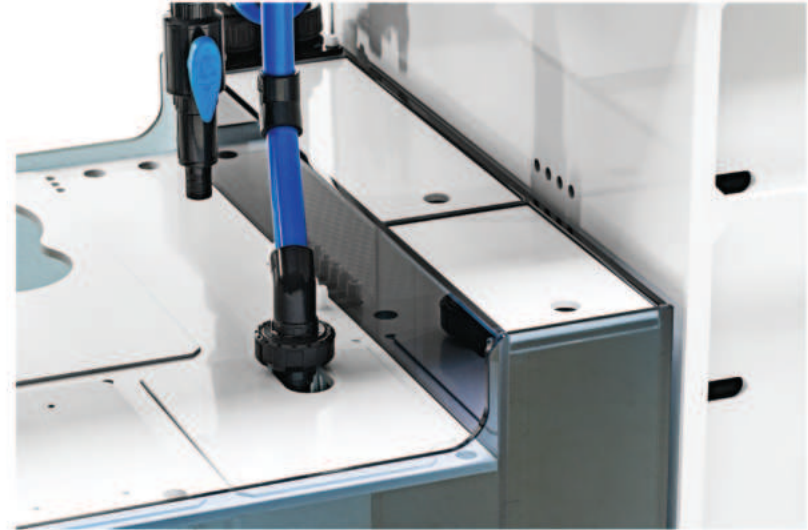
DIMENSIONS	L31.5 X D31.5 X H35.43IN L80 X D80 X H90CM
DOOR COUNT	4
STORAGE DRAWERS	1

① Prototype model shown



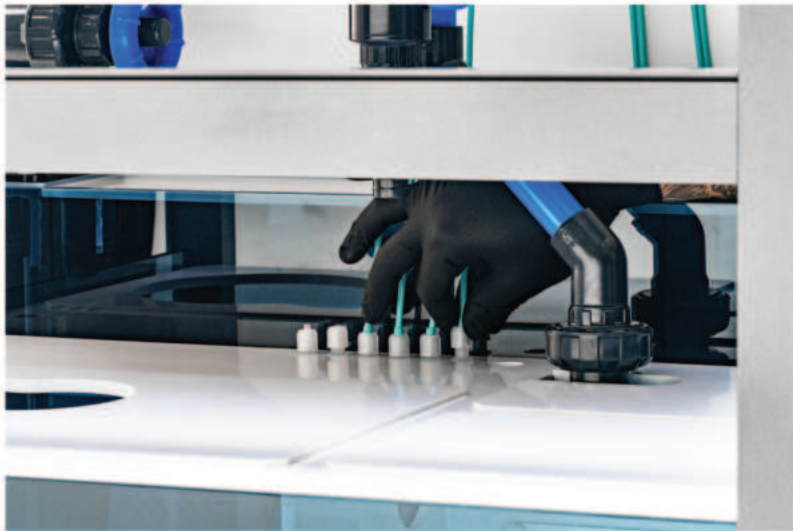
In tank organization

The included frag rack is designed to hold ICM frag plugs, allowing for use with most existing frag plugs on the market.



Sump included

The Sump comes with a built-in ATO reservoir designed for use with an external auto top off system (not included).



Dosing system compatible

6 pre-installed push-to-connect fittings are built into the sump to allow for direct connections with dosing systems (not included). The stand also comes with a designated area to store dosing pumps as well as dosing containers (not included). This area is designed to fit most dosing pumps currently on the market.





Electrical tower

Allows for superior wire management inside of the stand while the removable face plates provide an optimal surface for mounting various controllers. The front of the tower also features multiple pre-cut slots for mounting external controllers for easy access.



Wire management

Pre-installed cable management organizers allow for power cables and miscellaneous cables to be tucked away cleanly.



Stand organization

As with the other Reef Systems, the R80 aluminum stand comes with a soft close drawer for additional storage.

ULTUM NATURE SYSTEMS

2024 Catalog

All data and specifications presented are subject to change without notice and at any given time due to improved product research and development. Please contact your nearest authorized retailer for more information or visit us online: ULTUMNATURESYSTEMS.COM

©2016 – 2024 ULTUM NATURE SYSTEMS INC.



ULTUM NATURE SYSTEMS
DESIGNED IN LOS ANGELES, USA

EMAIL: SUPPORT@ULTUMNATURESYSTEMS.COM
FOR MORE INFORMATION PLEASE VISIT: WWW.ULTUMNATURESYSTEMS.COM

