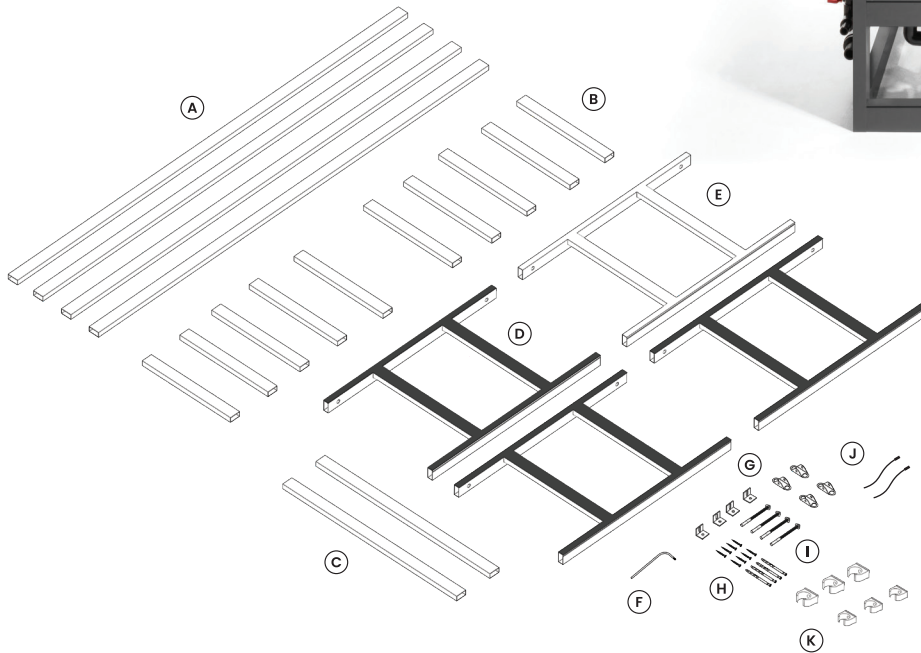


ALL-IN-ONE PLANT HOLDING SYSTEM DISPLAY STAND

INSTALLATION GUIDE



PACKAGE INCLUDES:

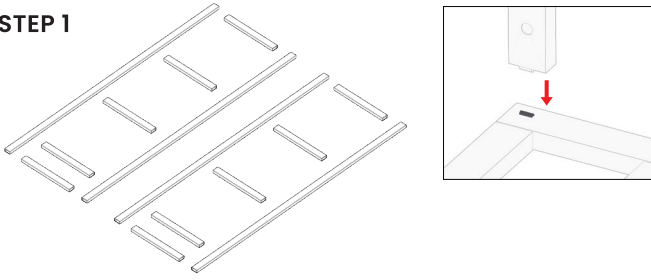
- A. [4] Vertical post
- B. [10] Short horizontal bar
- C. [2] Long horizontal bar
- D. [3] Horizontal shelf
- E. [1] Horizontal top shelf
- F. Tool
- G. [4] Floor mounting bracket
- H. [8] Screws
- I. [4] M8 (8MM) anchor bolt
- J. [2] Anti-tip Kit
- K. Plumbing clamp on kit



POWER DRILL, MASONRY BIT, HAMMER,
WRENCH REQUIRED, NOT INCLUDED

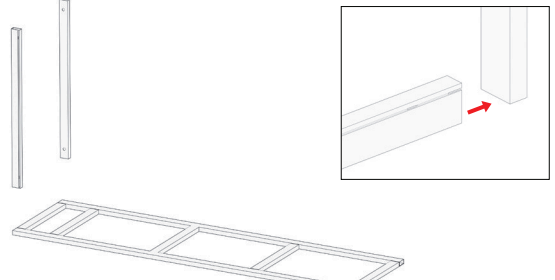


STEP 1



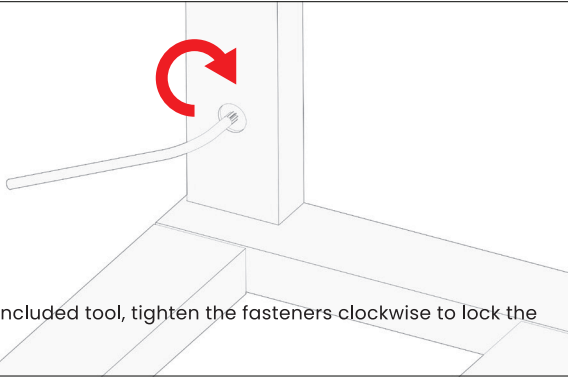
Insert the horizontal bars into the pre-cut slots on the vertical posts.

STEP 2



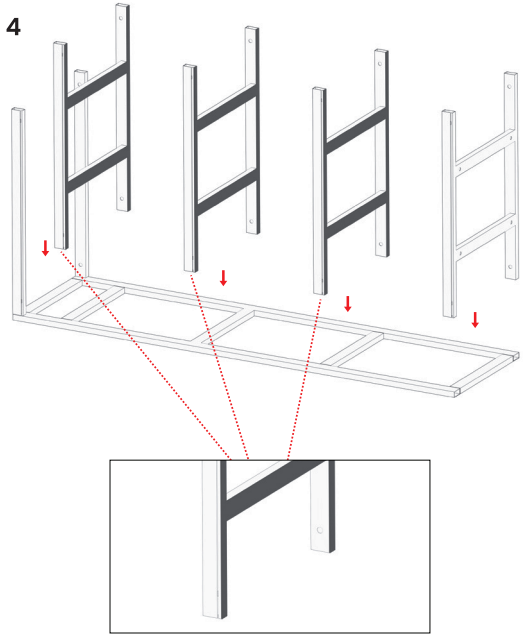
Insert the horizontal bars into the vertical shelves. Tighten the horizontal bars into the upright position.

STEP 3



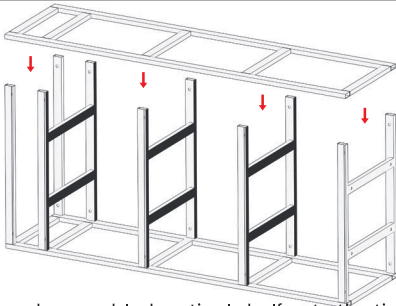
Using the included tool, tighten the fasteners clockwise to lock the parts.

STEP 4



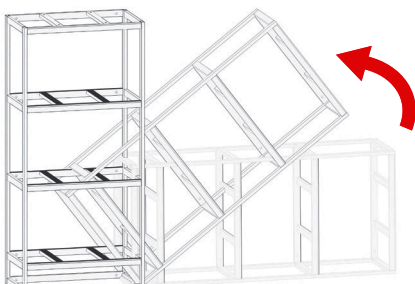
Insert the four horizontal shelves onto the vertical shelves. Three of the shelves come with a preinstalled rigid tank mat. These mats should be facing upwards, and positioned on the second, third, and fourth level. Make sure these shelves are tightened thoroughly.

STEP 5



Place the second assembled vertical shelf onto the tightened horizontal shelves and horizontal bars. Then lock the fastener to fully tighten.

STEP 6

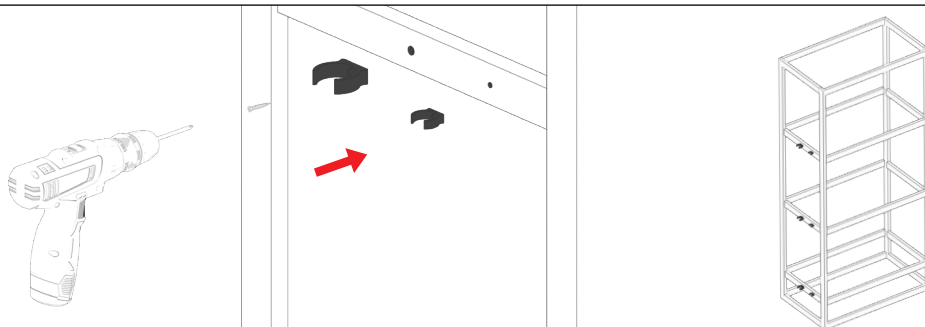


After vertical shelves are fully tightened to the horizontal shelves, turn the unit to the upright position, ensuring the rigid tank mats are facing upwards.



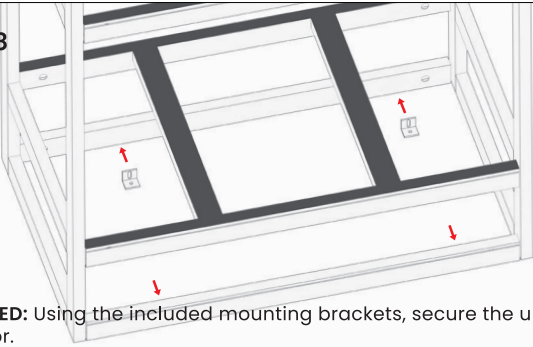
NOTE: Ensure that all fasteners are fully tightened. Double check that the rack is level and the floor is even. Uneven floors can cause the rack to be unstable.

STEP 7



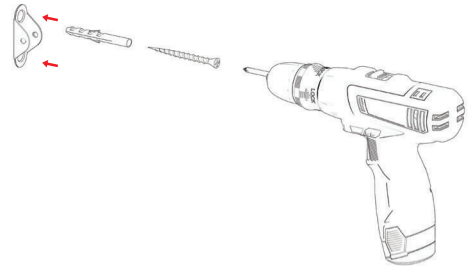
Screw the plumbing clamps into the left side of the rack, with smaller clamps installed towards the front of the tank.

STEP 8



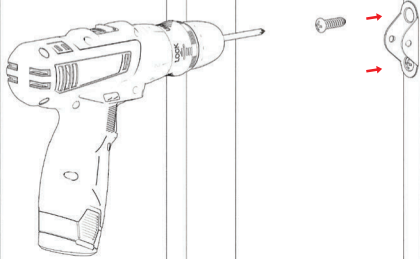
REQUIRED: Using the included mounting brackets, secure the unit to the floor.

STEP 9



Secure bracket to wall.

STEP 10



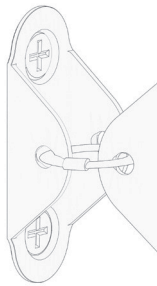
Secure bracket to rear top of cabinet. Make sure that brackets are aligned on the cabinet and the wall.

STEP 11



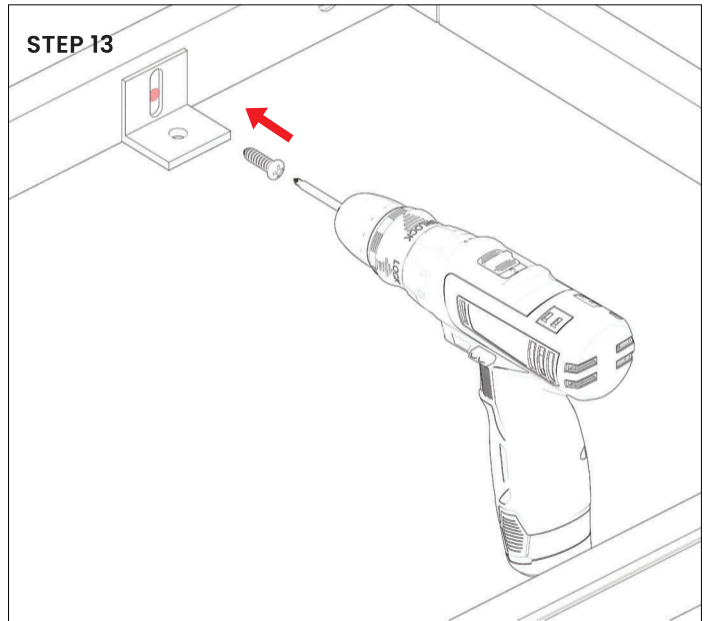
Push the stand in place.

STEP 12



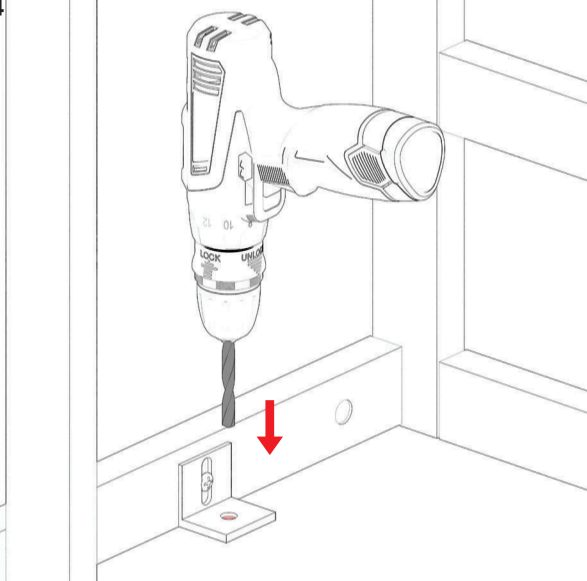
Secure the brackets together.

STEP 13



Install the floor mount bracket to the cabinet base.

STEP 14

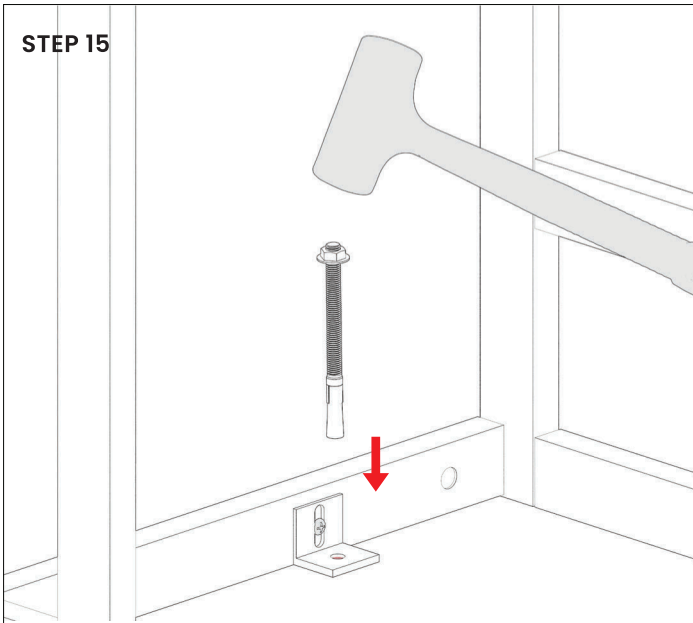


Drill M8 pilot hole into floor using masonry bit.

CONTINUE ON NEXT PAGE

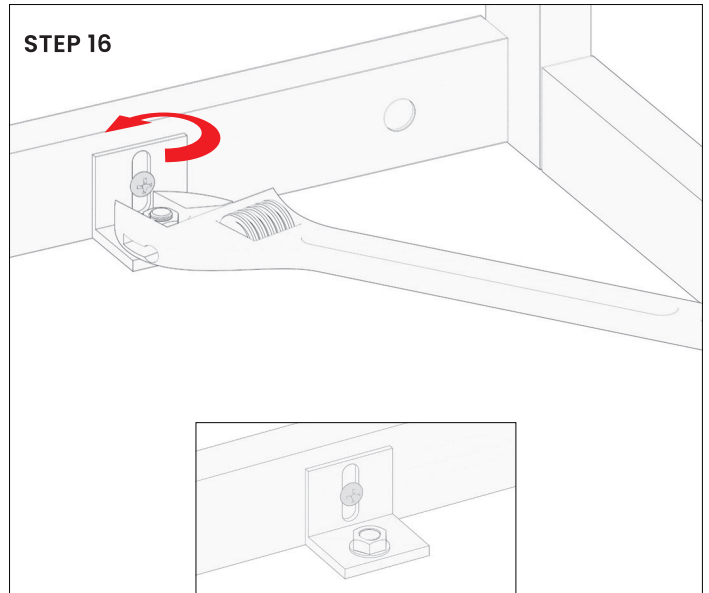


STEP 15



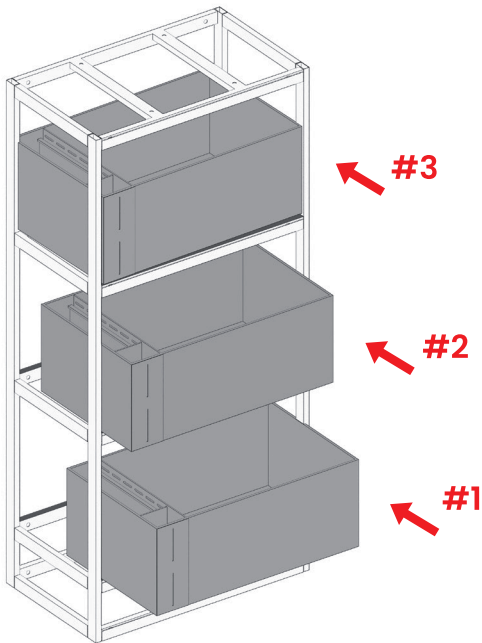
Secure anchor bolt into the floor using a hammer.

STEP 16



Once into place tighten the bolt with a wrench.

STEP 17



With two or more people; insert the tanks onto the rack by sliding the tanks into place. Ensure that the tanks are sitting evenly onto the rigid tank mats.



WARNING! The rack is designed to be installed on a level, concrete surface. The manufacturer and seller of this product shall not be held liable for any damages, injuries, or losses resulting from the improper installation or use of this product. It is the responsibility of the purchaser to ensure that the rack is installed correctly and securely in accordance with the provided instructions and applicable safety guidelines. Any incidents of tipping, falling, or failure of the rack caused by improper installation, failure to follow instructions, or the use of incorrect mounting hardware are not covered under the manufacturer's liability. Please consult a qualified professional if you are unsure about the installation process.





ALL-IN-ONE PLANT HOLDING SYSTEM DISPLAY STAND

TRIPLE DECKER

BOX 2 OF 2

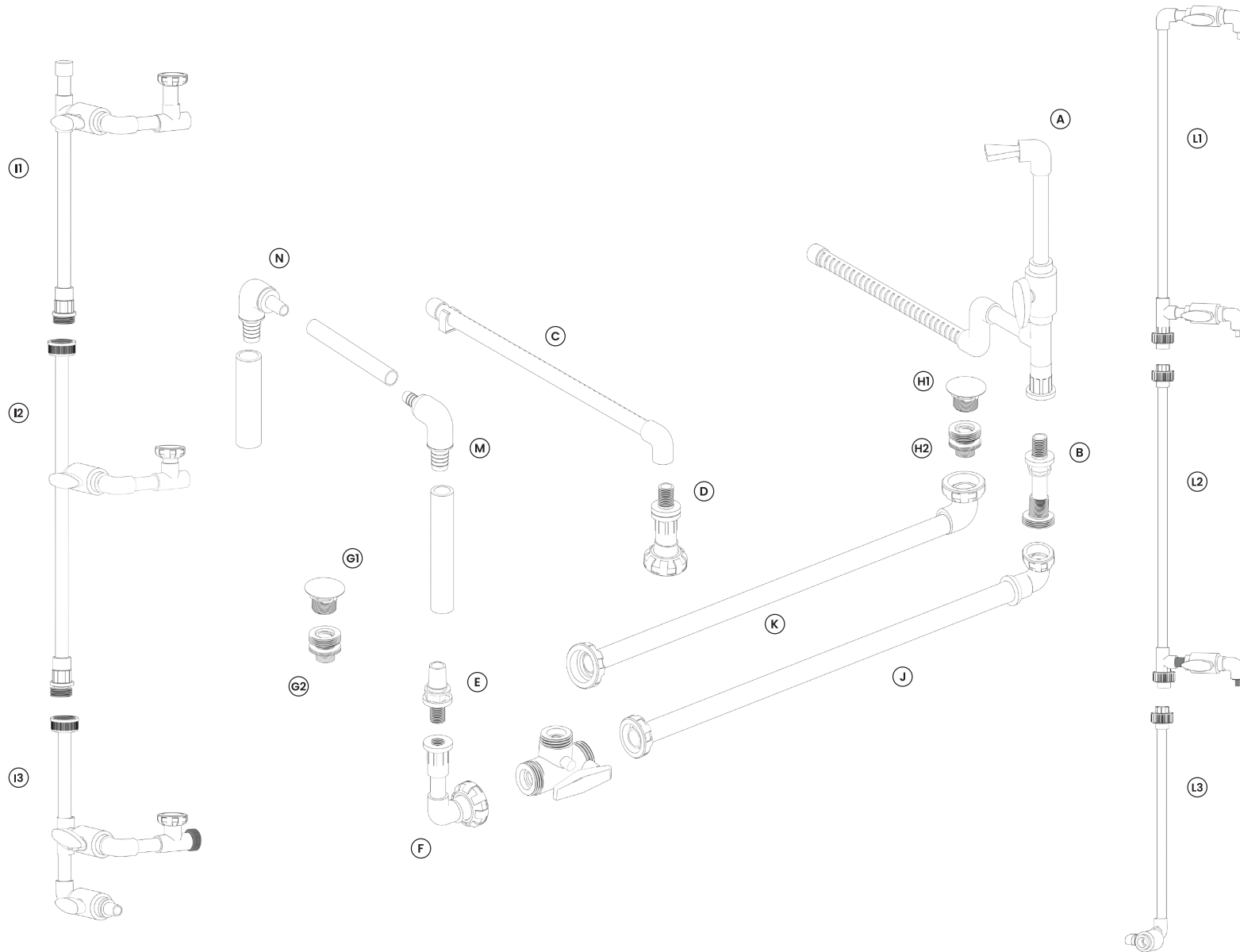
DESIGNED IN LOS ANGELES, USA
MADE IN CHINA
ULTUM NATURE SYSTEMS

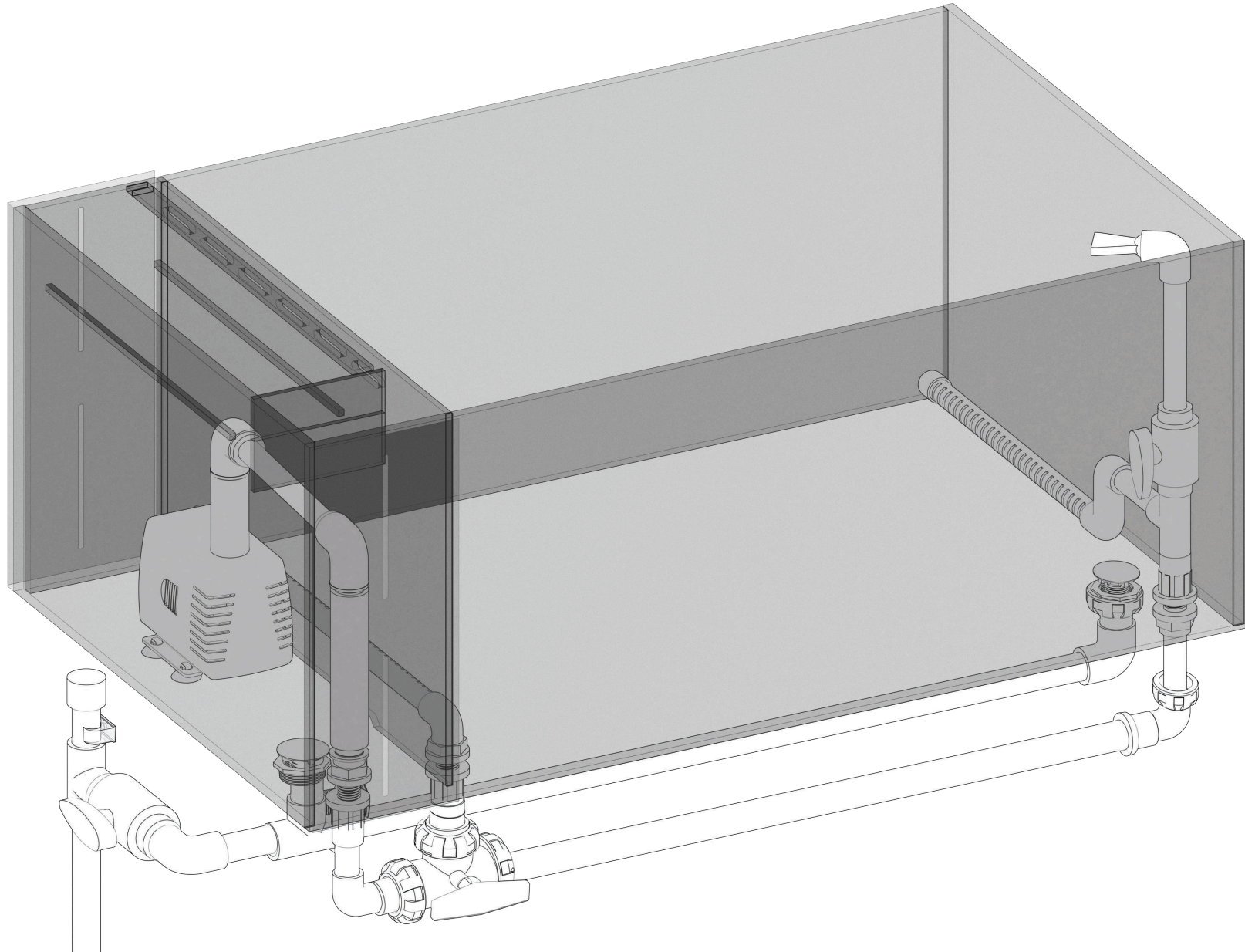


8 10167 37048 5

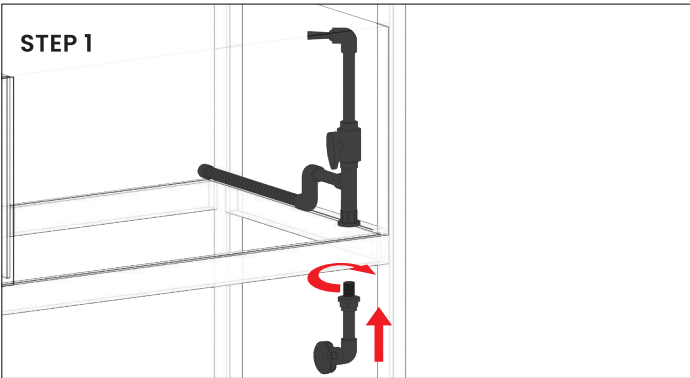
ALL-IN-ONE PLANT HOLDING SYSTEM DISPLAY STAND

PLUMBING GUIDE



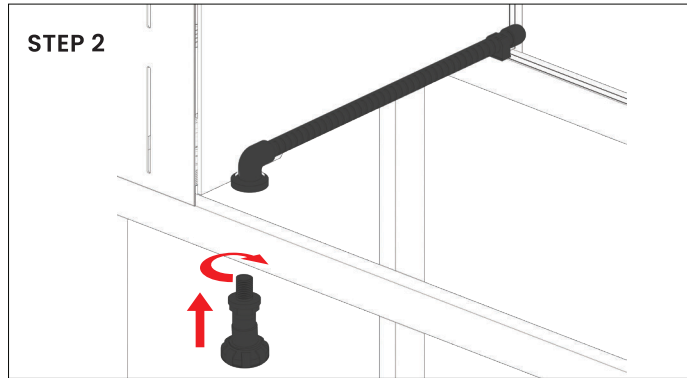


VIEW OF FULLY ASSEMBLED PLUMBING



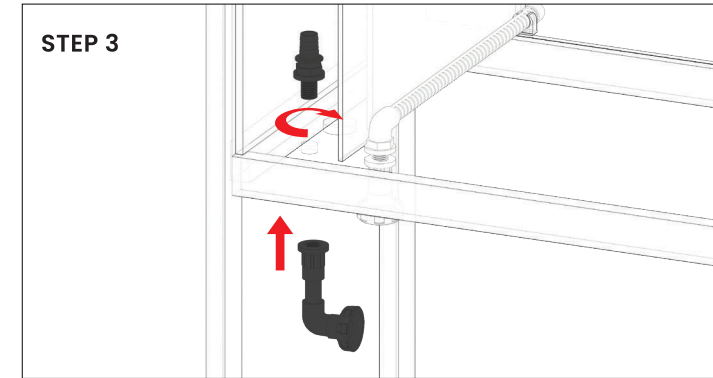
STEP 1

Ensure o-ring/gasket is secure on both part **A** and part **B**. Hold part **A** above front hole, screw on part **B** into part **A**.



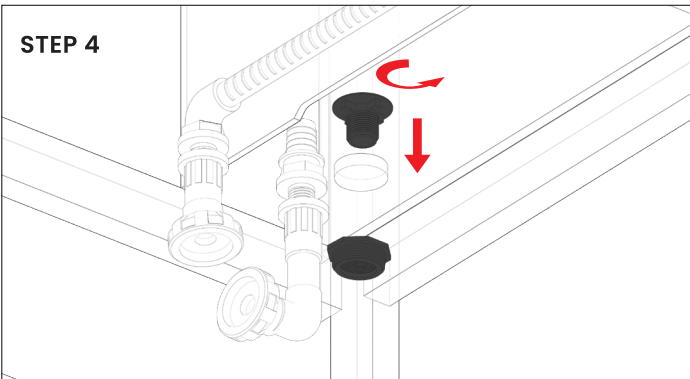
STEP 2

Ensure o-ring/gasket is secure on both part **C** and part **D**. Hold part **C** with 90 degree elbow fitting side above front hole, screw on part **D** into part **C**.



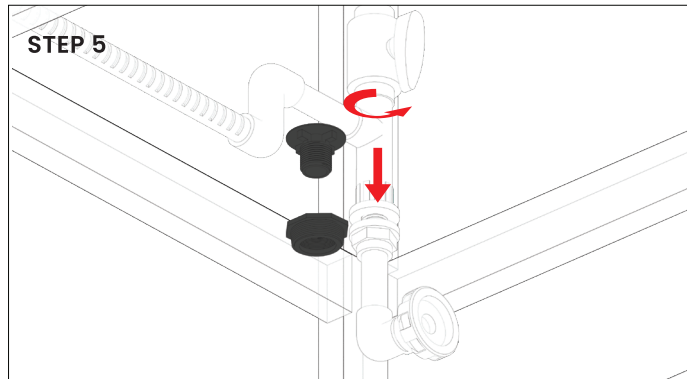
STEP 3

Ensure o-ring/gasket is secure on both part **E** and part **F**. Hold part **F** under front hole, reach into overflow box with part **E**, screw part **E** into part **F**.



STEP 4

Ensure o-ring/gasket is secure on both part **G1** and part **G2**. Separate parts **G1** from **G2**. Place **G2** below larger hole underneath overflow box, screw **G1** and **G2**.

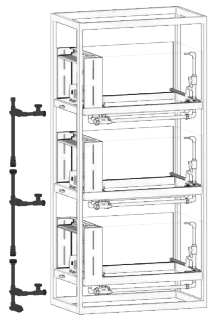


STEP 5

Separate parts **H1** from **H2**. Place **H2** below larger hole underneath part **A**, screw **H1** into **H2**.

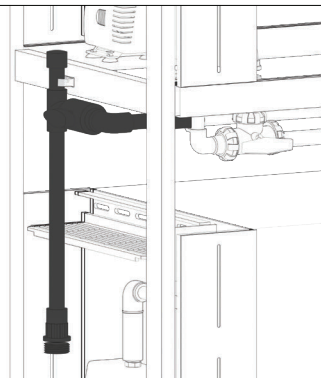
REPEAT STEPS 1-5 TO ALL THREE TANKS, THEN MOVE ONTO THE NEXT STEPS

NOTE: SIDE PIPE SPECIFICATIONS



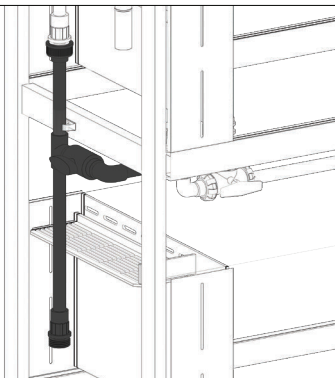
Ensure you are attaching the correct piece for part **I**, as it differs depending on what tank you assembling.

NOTE: SIDE PIPE TOP



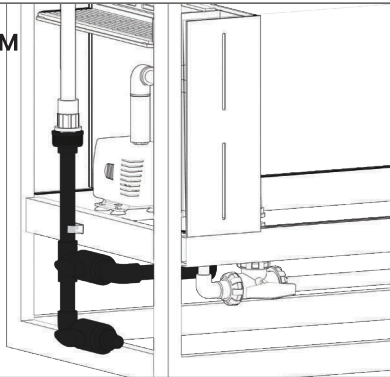
For **I1**, ensure that the connection has a cap on the top of the pipe.

NOTE: SIDE PIPE MIDDLE



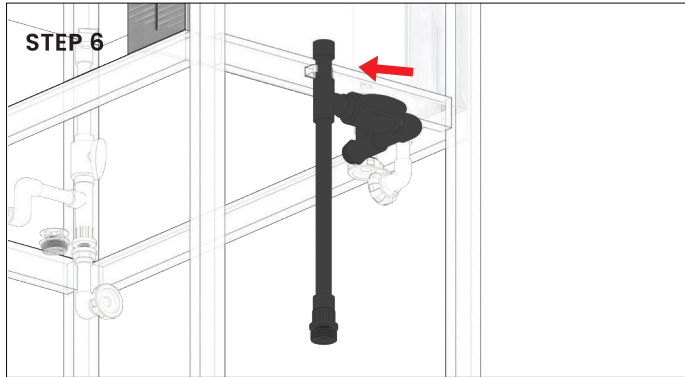
For the **I2**, ensure that the piece has a union on the top.

NOTE: SIDE PIPE BOTTOM



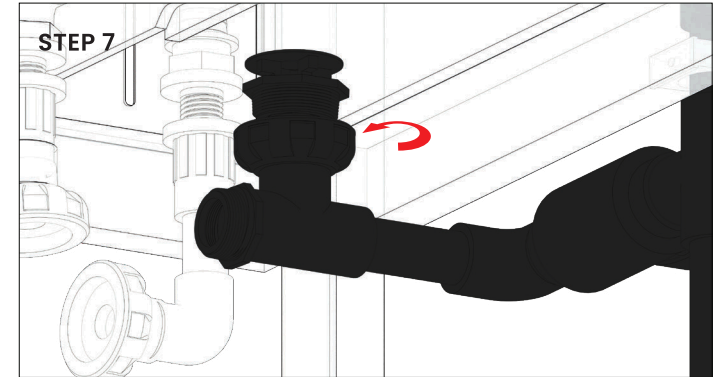
I3 has an elbow on the bottom leading to a ball valve.

STEP 6



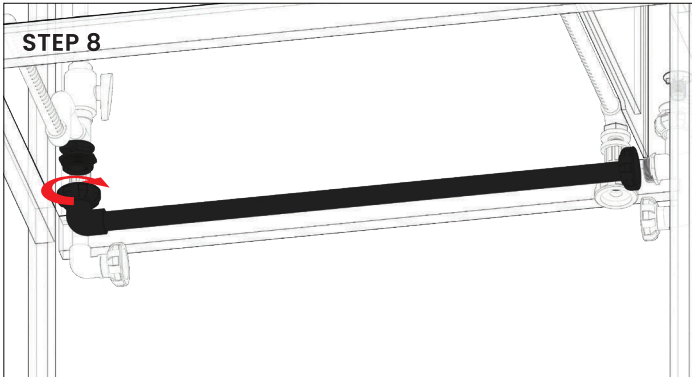
Snap part I into the clamp on the shelving unit.

STEP 7



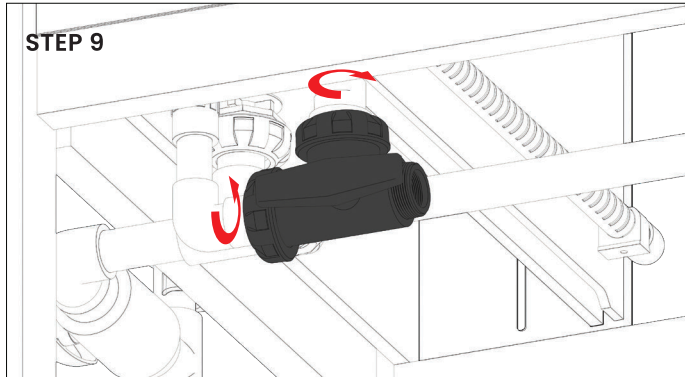
Screw part I to G2.

STEP 8



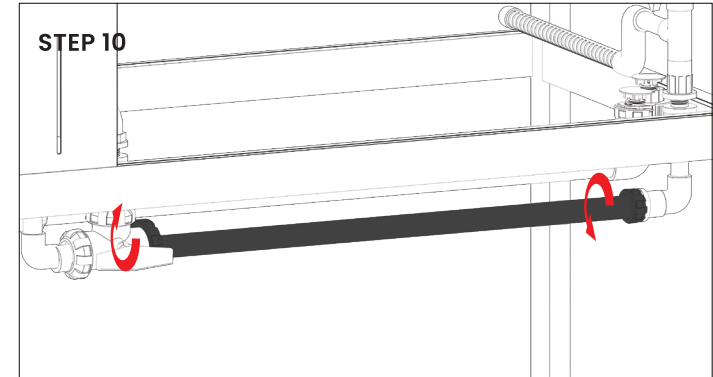
Attach part K to the part H2.

STEP 9



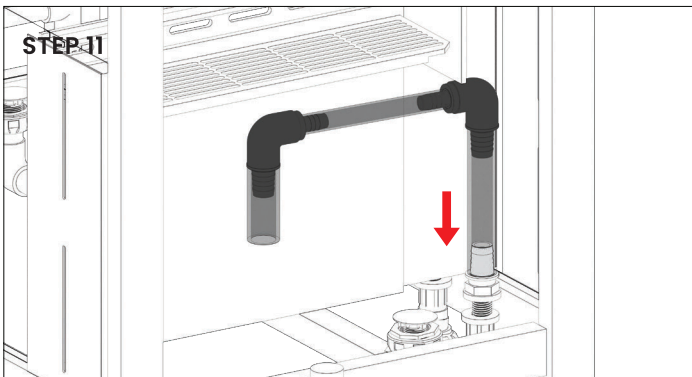
Attach part L to parts F and D.

STEP 10



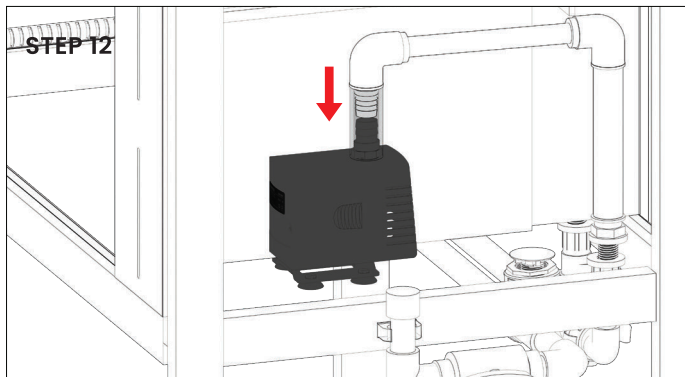
Attach part J to parts L and B.

STEP 11

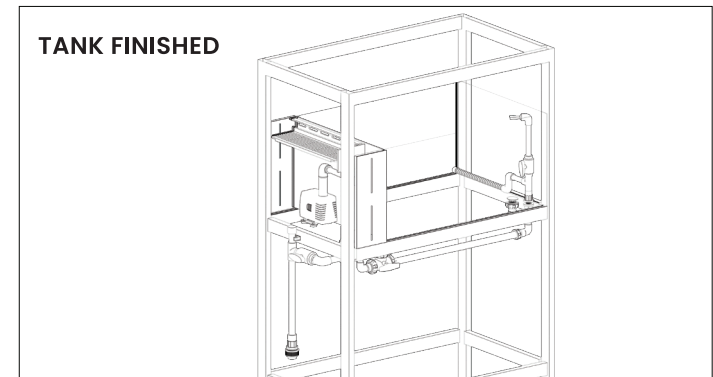


Using the included soft tubing and the barbed elbows (M & N), Attach the longer piece of large tubing to the bottom of M, and attach the skinnier tubing to the horizontal barb of elbow M. Attach N to the smaller soft tubing, and connect the shorter thick tubing to the bottom barb of N. The soft hose can be cut to best fit the pump placed in the overflow chamber. After cutting the soft tubing to size attach the tubing connected to N into your pump.

STEP 12

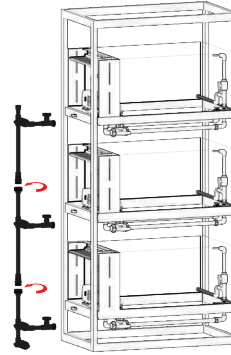


TANK FINISHED



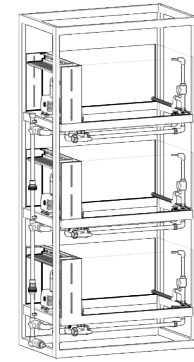
REPEAT STEPS 6-12 TO ALL THREE TANKS, THEN MOVE ONTO THE NEXT STEPS

STEP 13



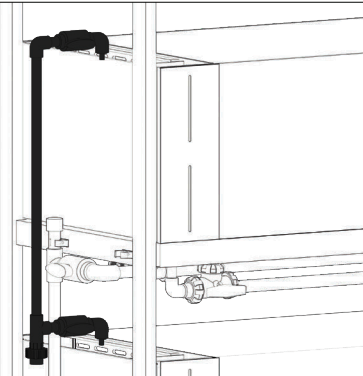
Attach the unions of parts **I1**, **I2** and **I3**.

FULL ASSEMBLY



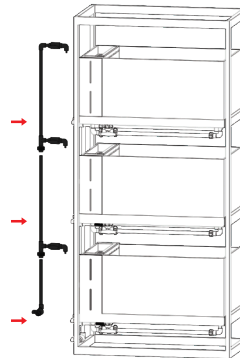
Ensure pipes are hand-tightened properly. Ensure that all drains and necessary bulkheads have the included O-rings. Do not overtighten, or you risk cracking the glass.

STEP 14



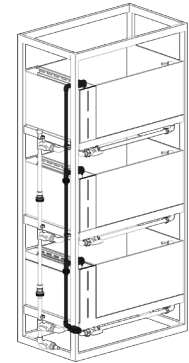
Attach Part **L1** into the top pipe clamp on the stand.

STEP 15

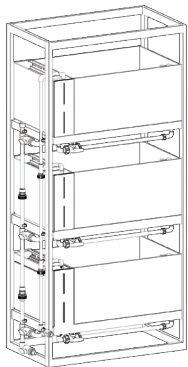


Attach **L2** and **L3** on the middle and bottom pipe clamps. Ensure the barbed **L3** is on the bottom.

FINAL REFILL PIPES POSITION



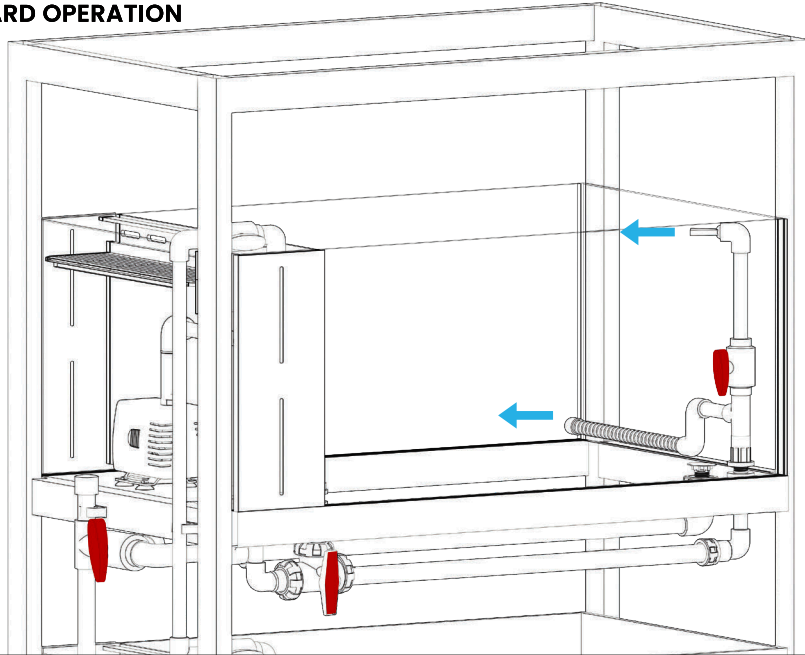
COMPLETE



CONTINUE ON NEXT PAGE FOR PLUMBING OPERATION GUIDE



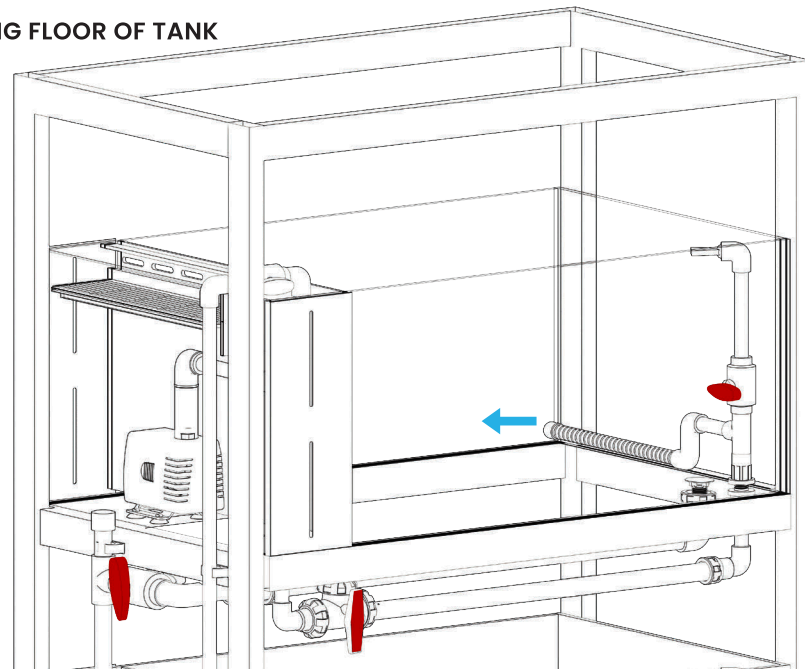
STANDARD OPERATION



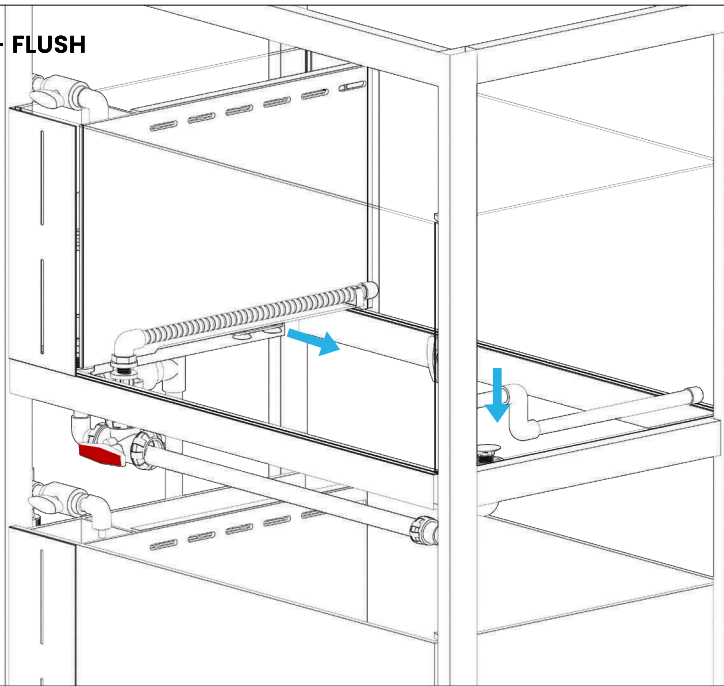
Water pumps from filter chamber through the spray bar and outflow nozzle

- Drain valve is closed (vertical)
- 3-way valve handle in vertical position, allowing water to pass through to spray bar and outflow nozzle
- Ball valve on outflow nozzle can be adjusted to adjust flow between spray bar and outflow nozzle

WASHING FLOOR OF TANK



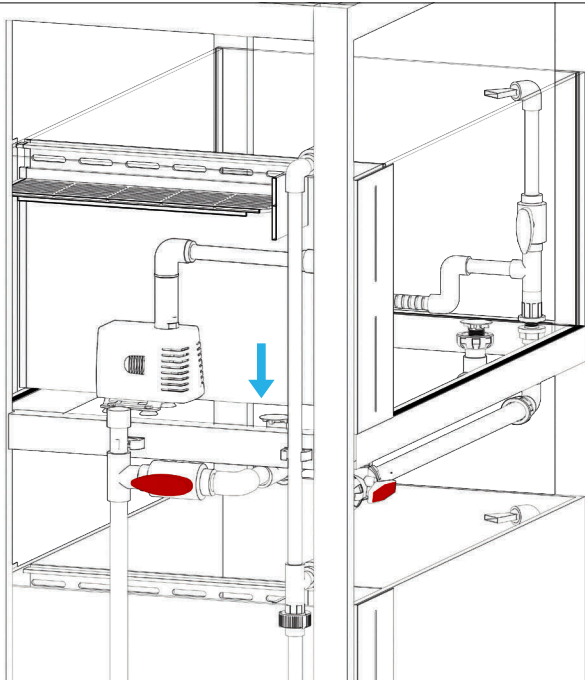
DRAINING - FLUSH



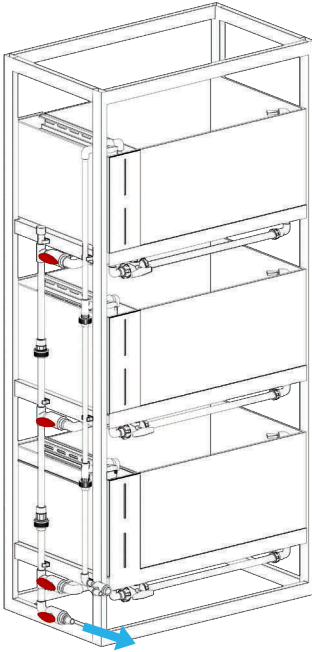
Water pumps from filter chamber through the left spray bar into the drains on the right of the tank and in the overflow

Drain Valve is open (horizontal) 3-way valve is in a horizontal position

DRAINING

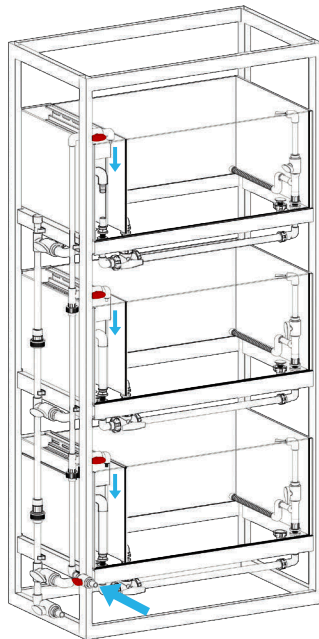


DRAINING - FLUSH



To flush/drain the system, open the bottom valve first. Connect bottom valve to either a floor drain, or inline pump. Flush/drain each tank individually by opening the valve on each tank.

REFILL



To refill the system, connect water supply to the return pipe assembly and control the outflow with the ball valve on each tank.